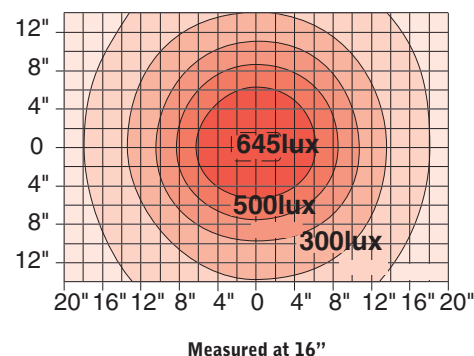


The CL Series offers low heat emission and bright, fluorescent light. It is available in a flexible gooseneck for easy positioning. The CL series comes standard with a 9W compact fluorescent bulb.

Features include:

- Energy efficient 9W fluorescent light source
- Specially designed lamp head helps prevent glare and minimizes eyestrain
- Flexible gooseneck allows easy positioning
- Low heat emission

CL Series Lux Table



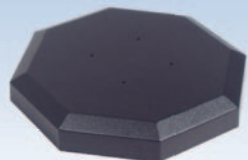
CL3000 - Flexible Gooseneck Light

	Standard	Optional
Power supply	120V	230V (Euro plug)
Arm Length	20"	-
Lamp Head	Straight neck	-
Base	Direct	Magnetic, C-Clamp, Table, L-Bracket
Switch	Rocker switch on base	-
Dimmer	No	No
Cord	7' SJT	-
Safety Class (Int'l)	IP20	-
Color	Matte black	Off-white

Ideal for applications including:

- Assembly Areas
- Office and Computer Workstations
- Workbenches
- Laboratories

CL Series Mounting Options



Octagon



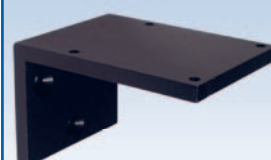
Magnetic



C-Clamp



Table



L-Bracket